



column rotted out needs re-build



coving missing numerous places





**Re-built column**  
**new walls**  
**new stainless steel**  
**edge protectors**  
**new FRP panels**  
**new Stainless steel**  
**coving**  
**everything caulk**  
**with 100 % silicon**  
**inductrual caulking**



**re-built column**



**new stainless coving**



**everything re-caulked**



**new re-built column**





**New stainless coving everywhere needed**



**all sinks, walls, coving re-caulked 100% silicon type**





removed all caulking wrong type used



re-caulked with 100% pure silicon caulking



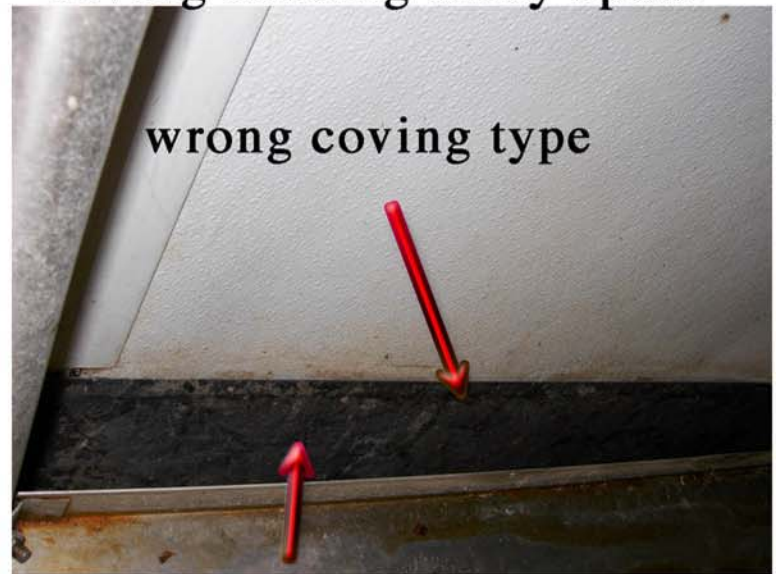
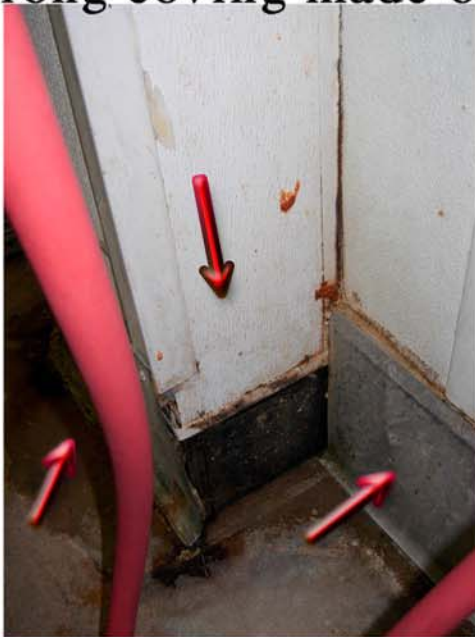
all new wall column



wrong coving made of tin



coving missing many spots





**all coving coming loose in meat prep area**